

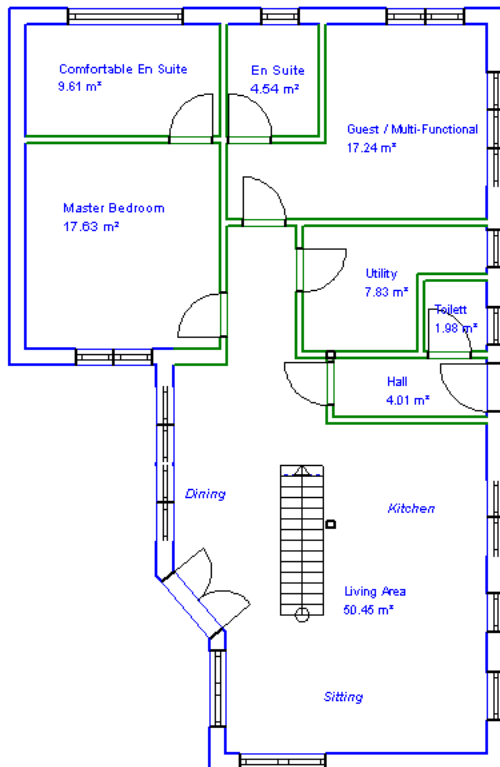
The `Project Oecotop` Show-House in `Malahide`

Key-Features:

- `Phoenix Timber Construction` system without any load supporting interior wall
- **Breathable** wall & roof construction, high **sound protection** by HMD
- Need of **Primary Energy** (calculated): **34,53** kwh/m2/a (heating & hot water) = **1.6t** of **pellets** (in reality we try to realize **1t**)

Technique:

- 12 qm Thermal Solar Panels (GPO-TEC)
- Pellet Boiler, 2-10kw modulated (Wamsler)
- 1,000l buffer level tank with PE insulation, 4 circuits, etc. (Wikosol 1004 by Wikora)
- Control by remote possible
- and more ...

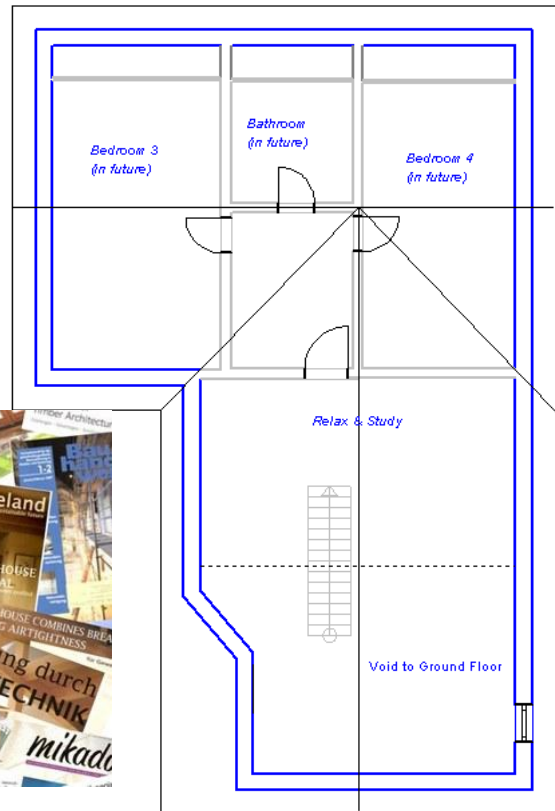


Specials:

- **Time** from contract to Ready-for-Living: 6 months (warranty is 9 month)
- **Update** to Zero/PLUS Energy standard possible
- **German** warranties for **everything**
- **30 years** Construction Warranty
- **Health-Care-Warranty**

Tests:

- **Airtightness:** **n50 = 0,33** (measurement by PK Energy Control Ireland with **Blower-Door-Test** & **Infrared Control**)
- **Mould Test:** Mould is **very low** (natural level / test done by www.biomes.eu)
- **VOC Test:** Total amount is less as **200** (test done by www.biomes.eu / technical analysis done by "Fresenius" Germany)



Details:

Total area (gf):	137.88m2/1,475 sq ft
Total area (gf+ff):	275.74m2/2,950 sq ft
NA Net Area (gf+ff):	229.27m2/2,453 sq ft
Net Volume (gf+ff):	581,81 m3
Relation Shell/Area (gf+ff):	0,832
NLA Net Living Area (gf+ff from 1.5m height on):	186.18 m2/1,992 sq ft

Total Cost (all inclusive - no hidden cost):

Ready-for-Living – without groundwork:

without FF: 300,000.-€ = **122/150.-€/ sq ft**

inclusive FF: 360,000.-€ = **147/181.-€/ sq ft**

Plus VAT

Solution instead of Confusion!